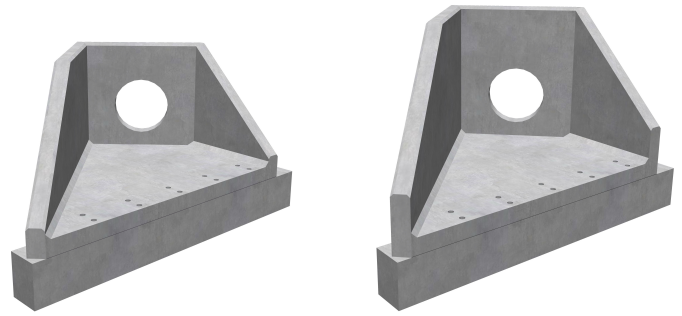


AH12C Headwall Range

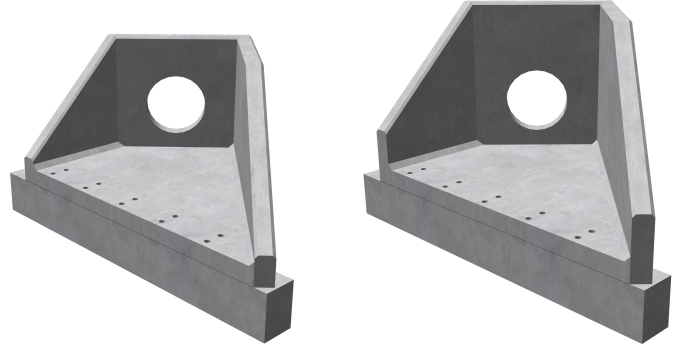


AH12CA LH

AH12CB LH

Up to 900mm Pipework
1300mm - 1550mm Backwall Height

The AH12C Headwall is a two part PCC Headwall that allows water to discharge at 45 Deg. angle, the Environment Agency's preferred method when discharging into a watercourse. The AH12C Headwall also complies with 'Sewers for Adoption' guidelines.



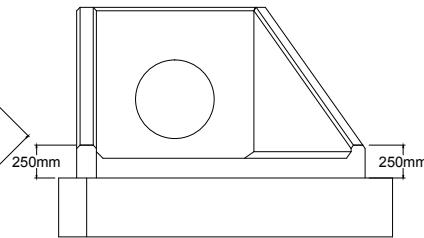
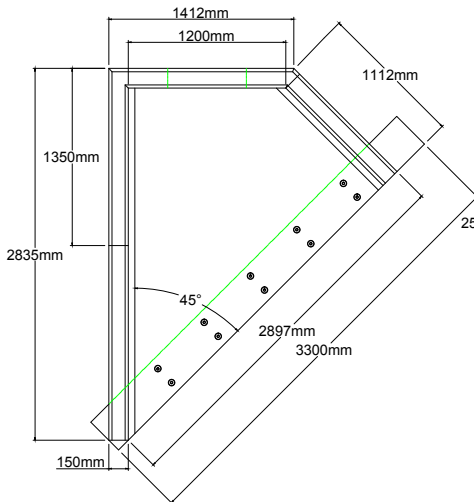
AH12CA RH

AH12CB RH

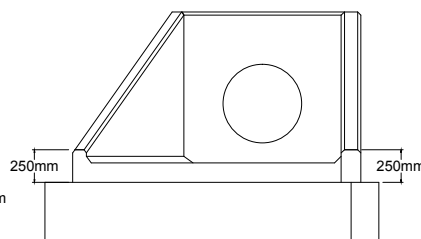
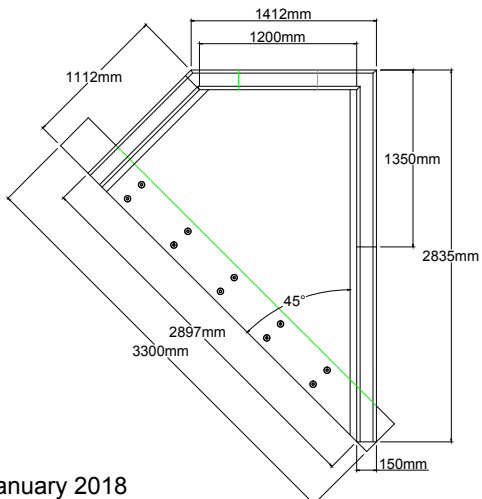
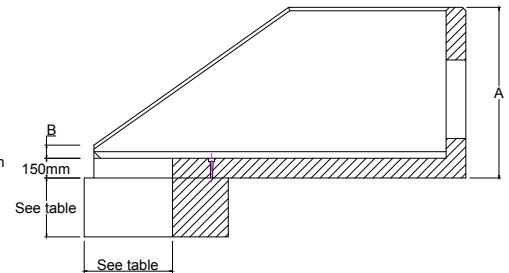
The AH12C is available with two back wall height options, two toe thickness options both available in three depths. The AH12C A option can accommodate Twin Wall or PCC pipes up to and including 750mm ID and the Ah12C B option can accommodate Twin Wall or PCC pipe up to and including 900mm ID.

Headwall	Max Pipe Opening Twin Wall	Max Pipe Opening Concrete	A	B	Approx Weight kg	Weight with 300mm thick toe kg			Weight with 500mm thick toe kg		
						400mm	650mm	950mm	500mm	750mm	1000mm
AH12CA LH	750	750	1300	100	3025	3975	4575	5285	4405	5095	5785
AH12CA RH	750	750	1300	100	3025	3975	4575	5285	4405	5095	5785
AH12CB LH	900	900	1550	350	3490	4440	5040	5750	4870	5560	6250
AH12CB RH	900	900	1550	350	3490	4440	5040	5750	4870	5560	6250

*All figures based on a invert level of 100mm. If invert level of less or greater than 100mm is required max pipe size might vary.



AH12C Left Hand Angled Headwall



AH12C Right Hand Angled Headwall

