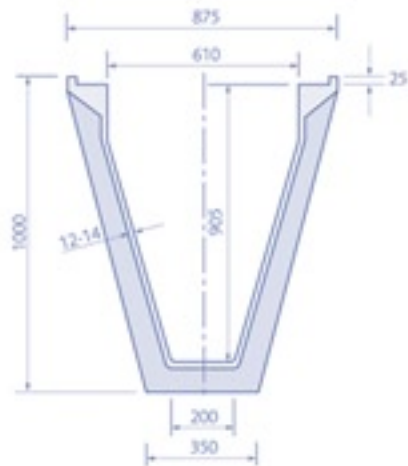
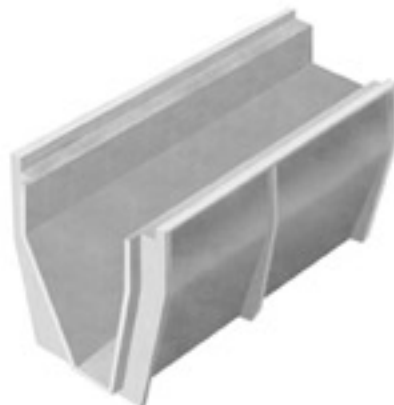


Althon CH 600 Drainage Channel



CH 600 overall effective length 1000mm

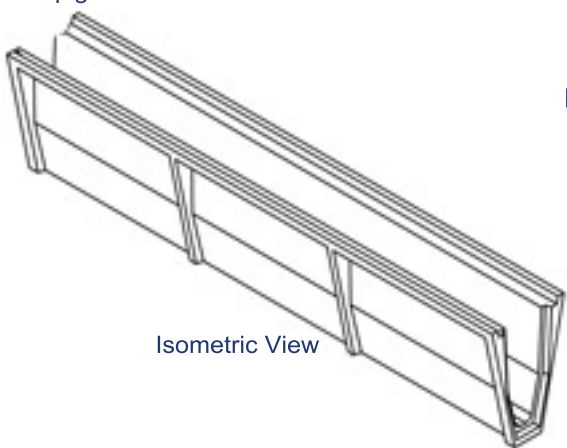


Althon				
	25mm/hr	50mm/hr	75mm/hr	100mm/hr
Flow rate I/S	Area Drained HA	Area Drained HA	Area Drained HA	Area Drained HA
290	3.50	2.20	1.40	1.05
460	6.62	3.31	2.21	1.66
570	8.21	4.10	2.74	2.05
610	8.78	4.39	2.93	2.20
750	10.80	5.40	3.60	2.70
1200	17.28	8.64	5.76	4.32
1600	23.04	11.52	7.68	5.76
2500	36.00	18.00	12.00	9.00

Althon High Capacity Drainage Channel can be laid without fall and will drain to the nearest outlet. The drainage channel's trapezoidal shape means it creates it's own velocity and as such is self cleansing.

Storage Capacity of channel to underside of lid for attenuation	
Channel Size	Capacity l/m
600	412

Spigot End



Isometric View

Socket End

Installation of Channels

1. Excavate trench to line and level having due regard for the size of the channel unit to be installed.
2. Ensure that there is a firm foundation to the bottom of the trench; otherwise seek expert geotechnical advice. Place 150mm minimum concrete grade ST4 in the bottom of the trench. If aggressive chemical conditions exist in the soil or ground waters, an enhanced concrete to suit must be specified.
3. Starting at the outfall end, lower the first channel unit onto the ST4 bedding, then dry joint successive units. Alternatively depending on the ground conditions, a trowel grade mastic can be used between adjacent units. Line and level the units with laser or other appropriate technique using the minimum solid packing under the channel.
4. Place ST4 grade concrete backfill surround to the channel, tamped or rammed as necessary to fill all voids, and finishing with a haunch 125mm to 250mm from the top level of the channel.