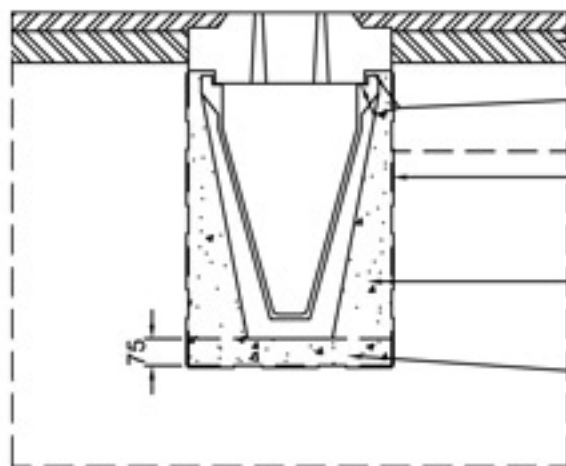
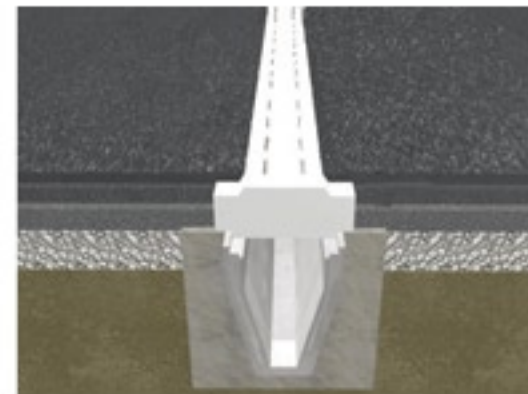
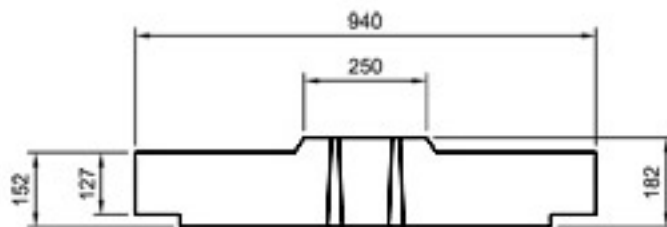


## DualSlot EHB Lid Unit 600



- Pavement design by others
- 10-15mm Class 1 mortar bed
- Geotextile membrane (dependent on ground conditions)
- Grade ST4 concrete, min, slump 50mm well compacted around channel
- Grade ST4 concrete semi-dry bed

- One visible section common to all channel sizes
- Suitable for trafficking up to EHB loading
- Slots flared to minimise blockages
- Rodding Eyes can be cast in to facilitate easy maintenance

The DualSlot EHB Lid has been designed to allow a standard 250mm central concrete upstand to be visible regardless of channel size. The remainder of the lid is covered by asphalt and can be used where HB loading is required. The DualSlot EHB lid has been designed for use in areas trafficked by articulated HGV Vehicles.