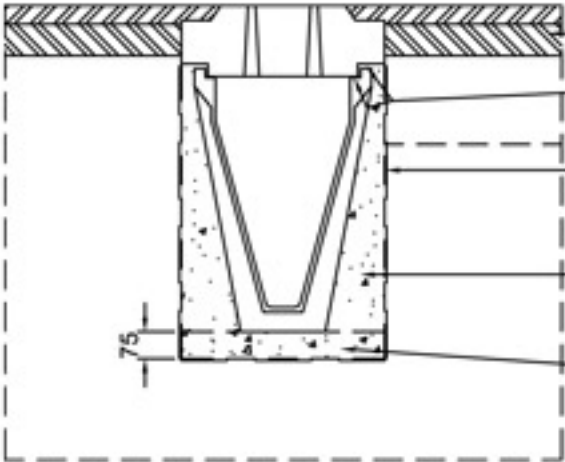
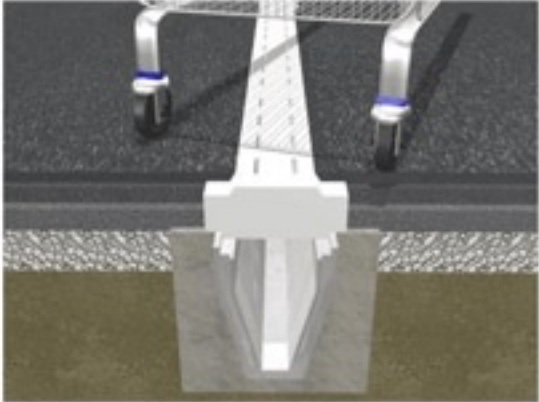
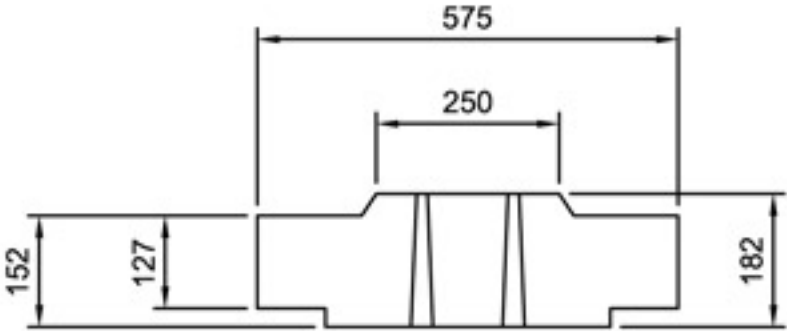


### DualSlot HB Lid Unit 375



- Pavement design by others
- 10-15mm Class 1 mortar bed
- Geotextile membrane (dependent on ground conditions)
- Grade ST4 concrete, min, slump 50mm well compacted around channel
- Grade ST4 concrete semi-dry bed

- One visible section common to all channel sizes
- Suitable for trafficking up to HB loading
- Slots flared to minimise blockages
- Rodding Eyes can be cast in to facilitate easy maintenance

The DualSlot HB Lid has been designed to allow a standard 250mm central concrete upstand to be visible regardless of channel size. The remainder of the lid is covered by asphalt and can be used where HB loading is required.