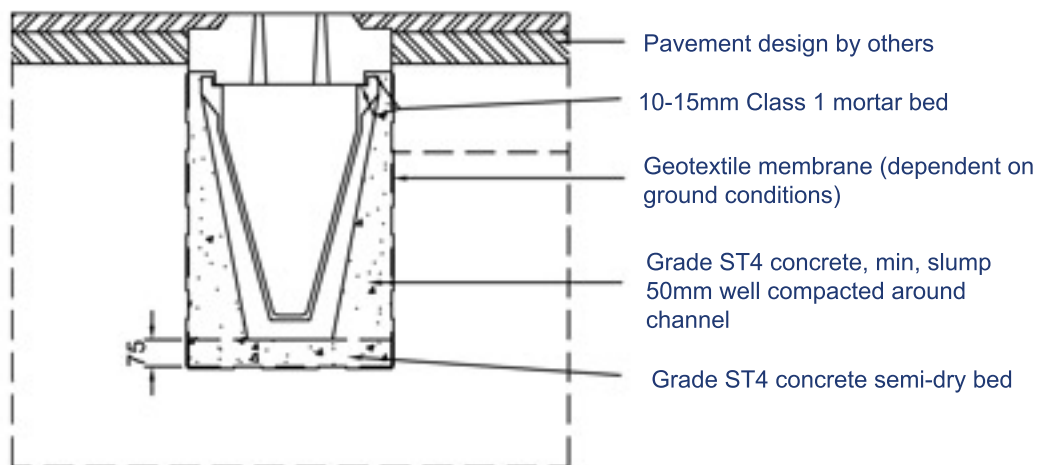
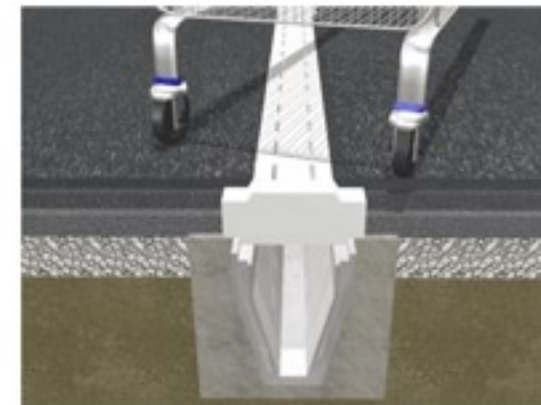
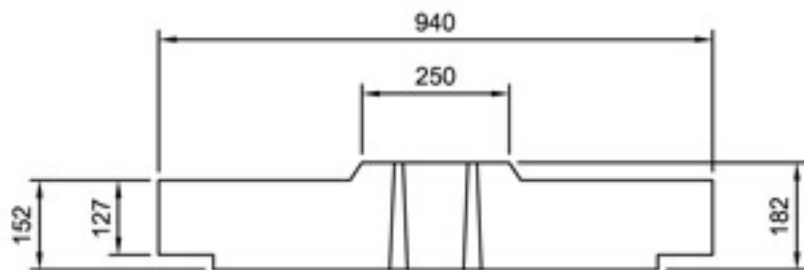


## DualSlot HB Lid Unit 600



- One visible section common to all channel sizes
- Suitable for trafficking up to HB loading
- Slots flared to minimise blockages
- Rodding Eyes can be cast in to facilitate easy maintenance

The DualSlot HB Lid has been designed to allow a standard 250mm central concrete upstand to be visible regardless of channel size. The remainder of the lid is covered by asphalt and can be used where HB loading is required.