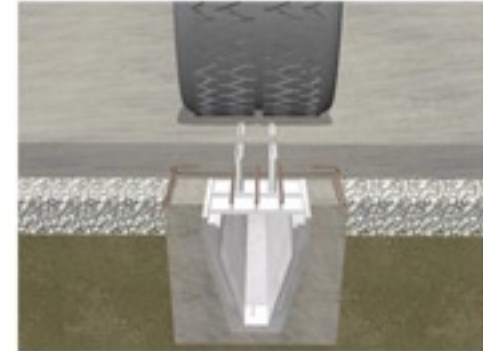
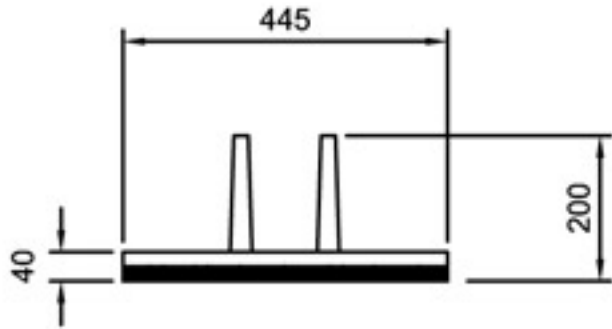


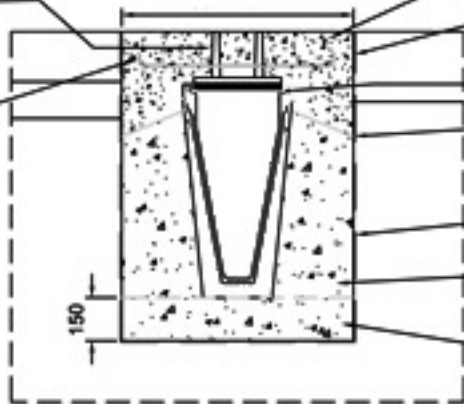
Forma D400 Lid Unit 375



GRC FORMA unit supplied by Althon

ALTHON supplied reinforcement as specified

Min. width "X" mm see table 1



Pavement quality concrete to designers specification
Optional position of joint as required by designer

10-15mm Althon high strength bedding mortar

Haunch (min, 125mm - max, 200mm from top level of channel)

Geotextile membrane (dependant on ground conditions)

Grade ST4 concrete, min, slump 50mm well compacted around channel.

Grade ST4 concrete semi-dry bed

- Standard loading conforms to BS EN1433 category D400
- Reinforcement supplied with lid to suit required loading
- Manufactured in lightweight G.R.C
- Eliminates risk of lid movement
- 200mm depth accommodates most slab depths
- Supplied with plastic caps to prevent spillage to drainage slots during installation

The FORMA lid has been designed for use in heavy duty industrial areas, e.g. distribution depots, dock areas, service yards etc. The Forma lid has been tested to D400 loading as standard.

* Tests performed using C50 Concrete. Copies of test results are available upon request.