

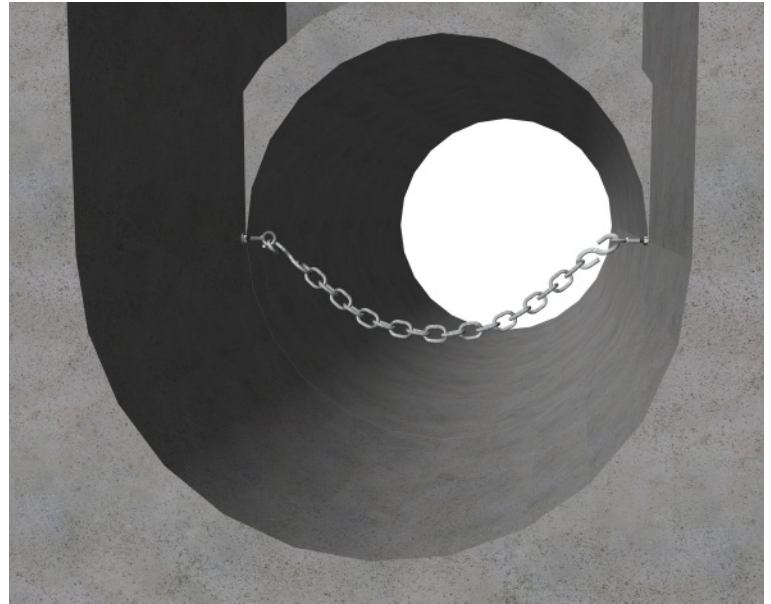
**Althon Sewers for Adoption
Safety Chains**

Althon Sewers for Adoption Safety Chains



Features and Benefits

- Fully compliant with WRc 'Sewers for Adoption', 7th Edition & 'Sewers for Scotland' 3rd Edition
- Meets the requirements of the 'Civil Engineering Specification for the Water Industry' (CESWI), 7th Edition
- Available in either galvanised mild steel or stainless steel 316 as required to meet water utility specifications
- Supplied fully assembled for quick installation in conjunction with Althon installation guide
- All grab chains have a minimum break force of 30kN and a proof force of 15kN
- Test certification available upon request



Standard Chain Fixing Kit

Outlet Pipe Internal Diameter (D)	Galvanised Mild Steel Part Code	Stainless Steel Part Code
375	ALT-CF00001	ALT-CF00002
450	ALT-CF00003	ALT-CF00004
525	ALT-CF00013	ALT-CF00014
600	ALT-CF00006	ALT-CF00015
675	ALT-CF00007	ALT-CF00016
750	ALT-CF00008	ALT-CF00017
825	ALT-CF00009	ALT-CF00018
900	ALT-CF00010	ALT-CF00019
1050	ALT-CF00011	ALT-CF00020
1200	ALT-CF00012	ALT-CF00021
Bespoke	Upon Request	Upon Request

For more information contact our sales team on **01603 488700** or sales@althon.co.uk