



Stop Silent Light Valve (SSL)

The SSL inline valve is designed for foul drainage within buildings, meeting the requirements of the BS-EN13564-1:2002 standard. It is suitable for any drainage application requiring minimal headloss in small pipe sizes to 200mm

In partially filled pipes, the low upstream head acts on the large area of the EPDM rubber profile and opens easily allowing solids and rags to pass easily

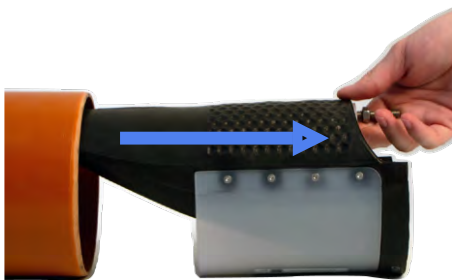
SSL alves are usually fitted the the outlet of a gully or chamber to prevent odours and sewer surcharge.

The simple insert and expand clamp which means installation can be done in minutes, without "hot work" permit for ATEX zones in sewers.

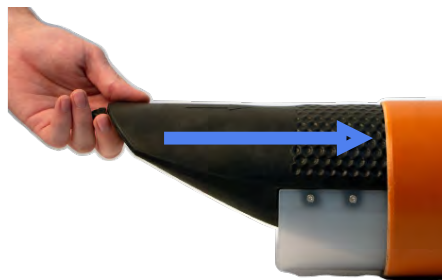
The valves are delivered ready to install in any pipe.

SSL Installs to any pipe

The clamp can be expanded from either end of the valve to create a watertight seal to the pipe.



Installing at the end of pipe



Installing in a chamber



Includes 3mm or 4mm hex T-Tool for simple fixing by hand

v2.0

Anti-flood Device EN13564-1

BS-EN13564:2001 applies to foul service inside buildings, pipe sizes 100-200mm (there is no standard for larger pipes)

Odour Control EN 1253-1

Effective as a trap or gully

EPDM max Temp rating 120°C

SSL valves can be used in food preparation washdown drains with cleaning chemicals

Universal Clamp seals any pipe

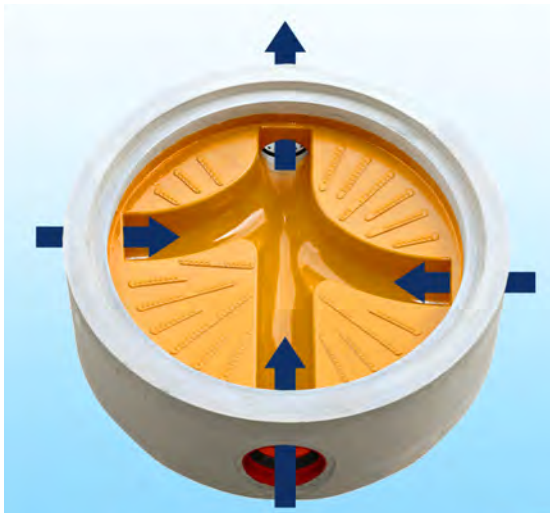
The clamp can be expanded from either side of the valve

Install to existing drainage

Ideal solution for backflow in residential and commercial sites

SSL Valves

Pipe Internal Diameter mm	Model	Kg	Length mm	Foul	Storm
75-80	CF-IL-RESI-80	0.17	180		☑
93-101	CF-IL-RESI-100-CE	0.3	215	☑	☑
98-106	CF-IL-RESI-110-CE	0.34	230	☑	☑
114-125	CF-IL-RESI-125-CE	0.54	270	☑	☑
145-154	CF-IL-RESI-150-CE	1.0	330	☑	☑
183-200	CF-IL-RESI-200-CE	2.1	420	☑	☑



Design Details

Unique Seal to Pipe the lower half of the EPDM meets and seals directly to the pipe.

Minimal Thickness the lower half of the valve is only 3mm high (150mm model). This is the lowest flow profile of an inline valve.

Roof Upstream Profile to the pipe eliminates dead space for debris to pack and distort the membrane, a significant improvement over older designs.

No power is required the valves work during storm electrical power failures.

Design Life Check-Flex® G5-RESI valves are designed for long life. EPDM, 316 st/s and PP Polypropylene are recognised as durable and long life materials in sewer networks

Email: sales@althon.co.uk
T: 01603 488700

Max Back Pressure Rating:

Sizes 80-200mm rated: 10m

Fits to circular chamber outlet

Outlet install means chamber will not surcharge.

Easy inspection from above ground.

Horizontal Open Pressure level

Typical drained pipe, not submerged

CF-IL-RESI-110-CE Open: 190mm

Close: 70mm

CF-IL-RESI-150-CE Open: 120mm

Close: 50mm

Vertical installation

Ideal for roof rainfall pipes

Or Food Preparation Washdown Areas