

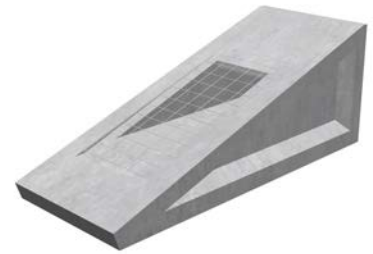
Swale Inlet Headwall Range

Up to 300mm Pipework

Althon swale and pond inlet headwalls up to 300mm are fibre reinforced precast concrete open inlets allowing surface water runoff to enter SUDS features, or to act as an outlet or overflow. The profile of the inlet 1:3 (18 Degrees) is the same as the surrounding ground in accordance with guidelines for the construction and adoption of swales and ponds. There is a recess formed in either side to key the unit into the slope of the swale or pond and prevent it slipping.

We can provide our swale and pond inlets with stainless steel or galvanised steel bar or mesh gratings. The grilles are fixed to the inlet with 4 No anti-tamper bolts, when the bottom two bolts are removed the grating hinges for ease of maintenance. The grating is located in an 8mm deep recess in the face of the unit to protect it from damage during routine maintenance i.e. mowing.

We are also able to factory fit inline non – return valves such as Wastop valves to our Swale Inlet units



150 Swale Inlet Headwall

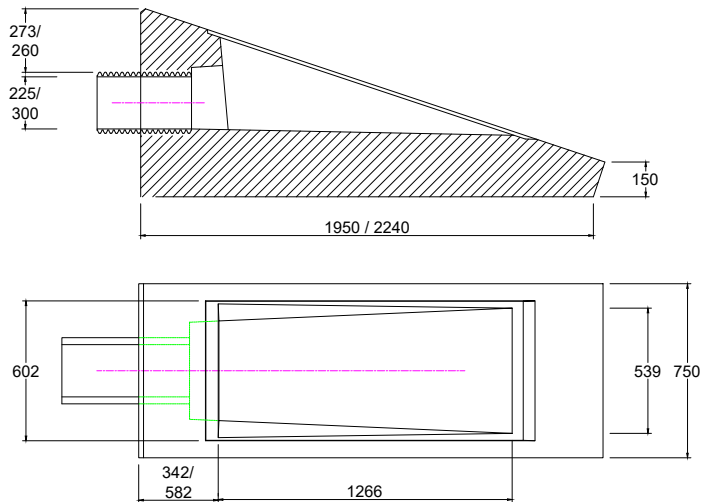


225 Swale Inlet Headwall

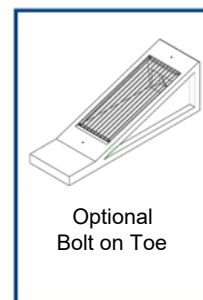
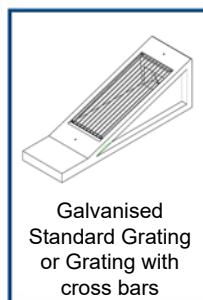
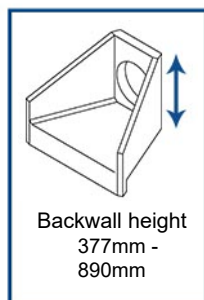
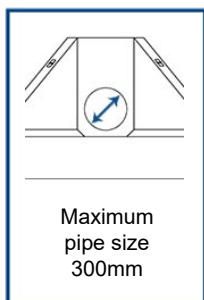
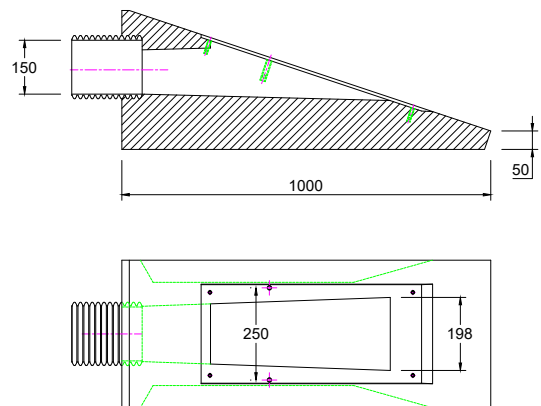


300 Swale Inlet Headwall

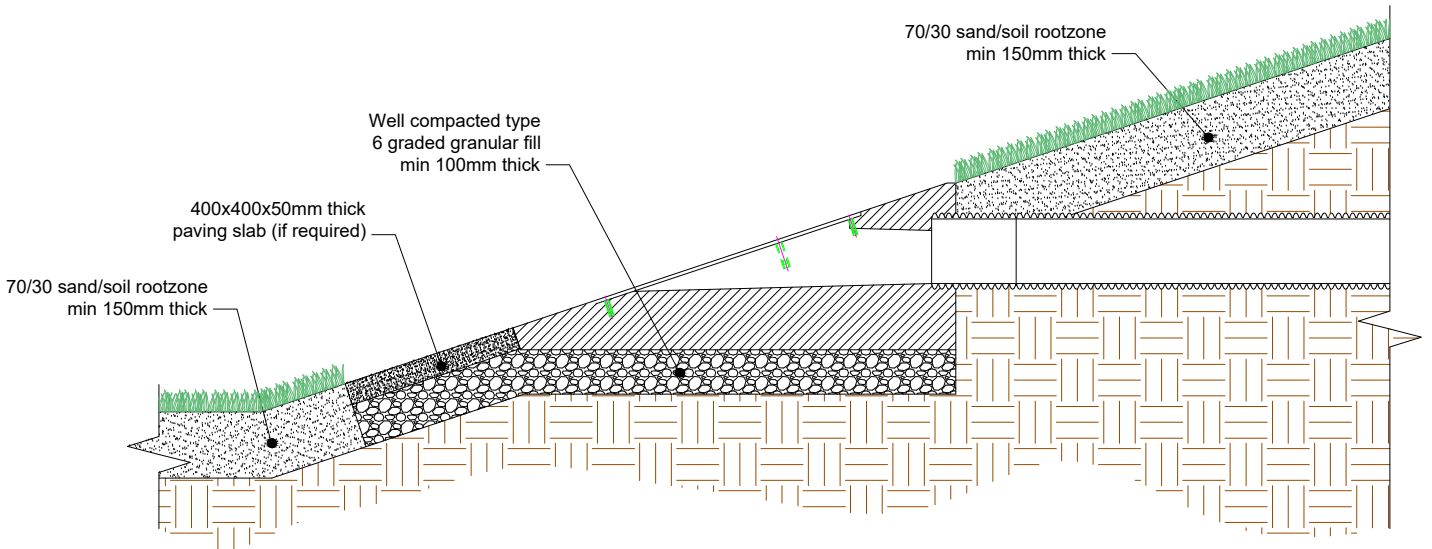
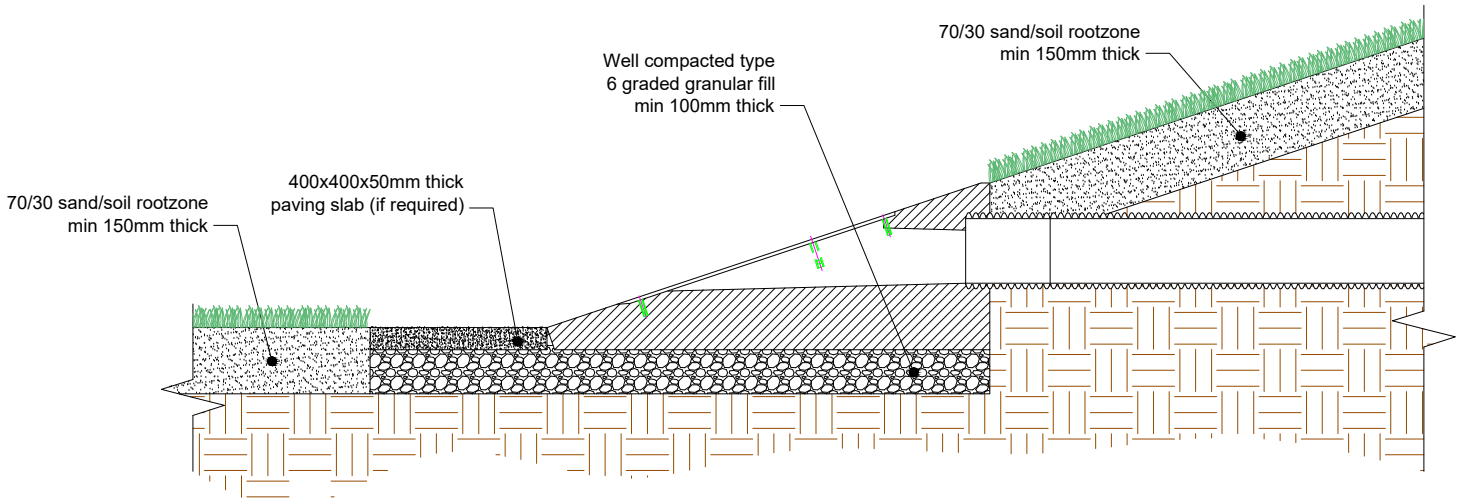
225 / 300 Swale Inlet Headwall



150 Swale Inlet Headwall



Installation Guide 150mm Swale/Pond





Installation Guide

225mm & 300mm Swale/Pond

